

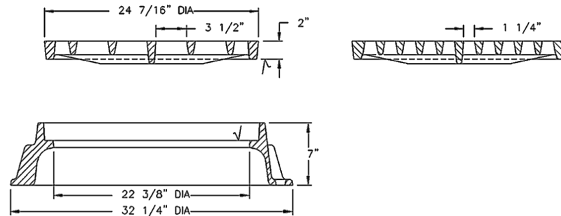
1734 FRAME & COVER

Heavy duty
Machined bearing surfaces
Stackable frames
Uses 1733 covers and grates

Options
Top flange frames
Special lettered covers
Grates

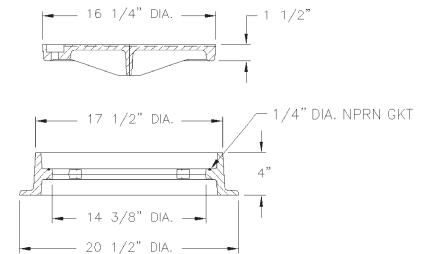


1734 frame with Type M Grate
"DUMP NO WASTE!" lettering and fish image
Approx. 166 sq. in. open area



1755 FRAME & COVER

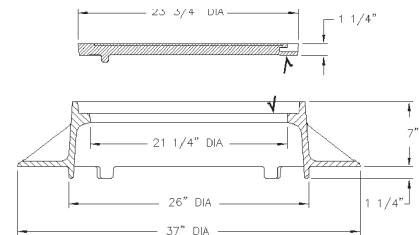
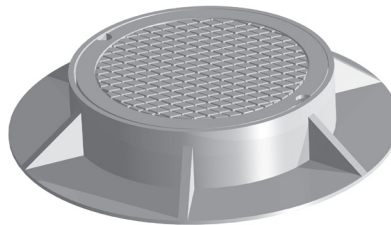
Heavy duty
Reversible frame — 2905
for top flange
Unit assembled standard with
4 1/2" SS bolts and 1/4" gasket
Frame has cast bolting lugs
Watertite assembly



1771 FRAME & COVER

Heavy duty
Machined bearing surfaces
Accepts 1770 covers and grates
Accepts 1337 and 2855 covers

Options
Special lettered covers
Extra heavy duty cover
Gasket seal cover
Cam lock
6" height frame — 1337



Type M Flat Grate
Approx. 185 sq. in.
open area

Supplied By:

**TRENCH DRAIN
SUPPLY**

877-903-7246

www.trenchdrainsupply.com